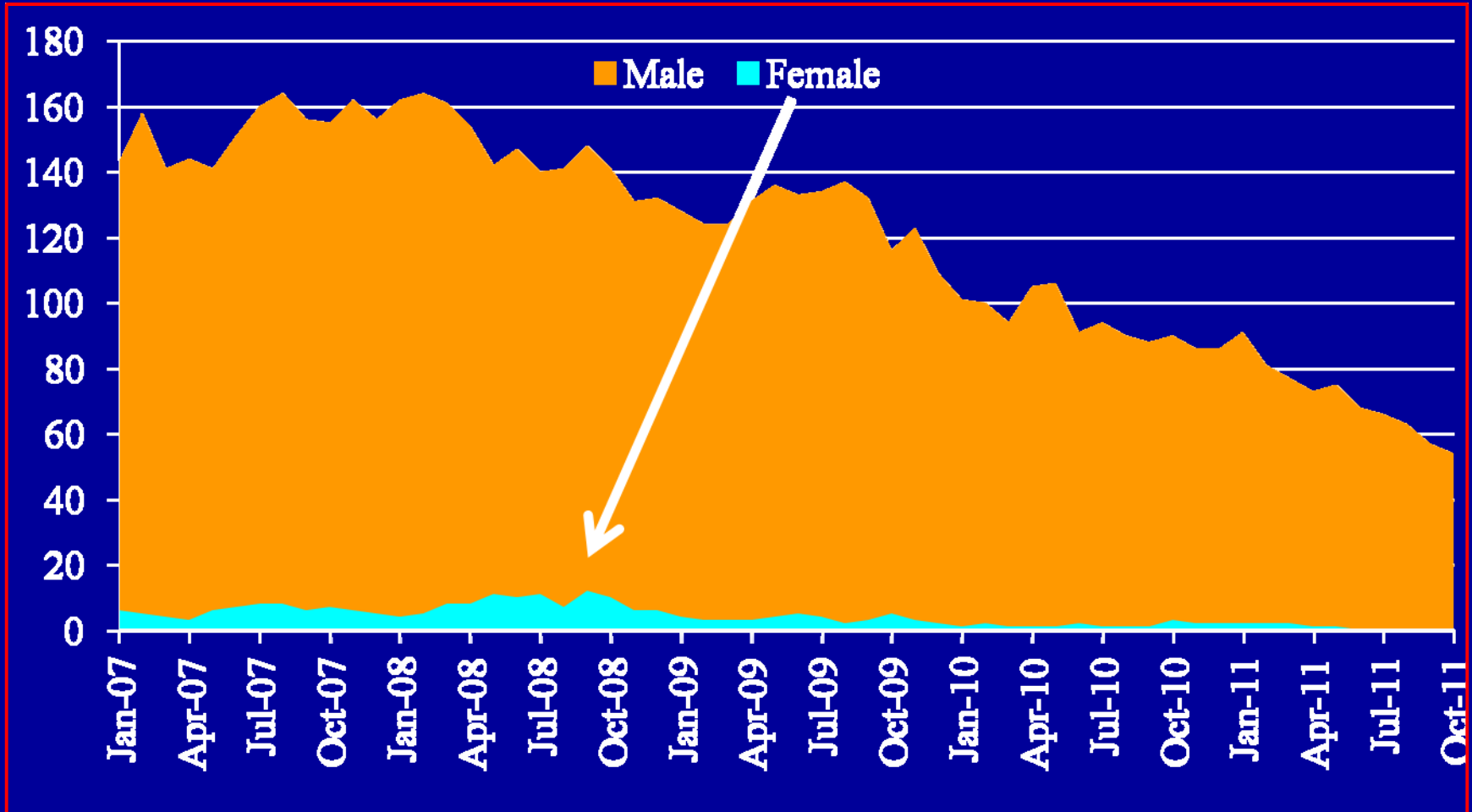


State of Connecticut Department of Correction



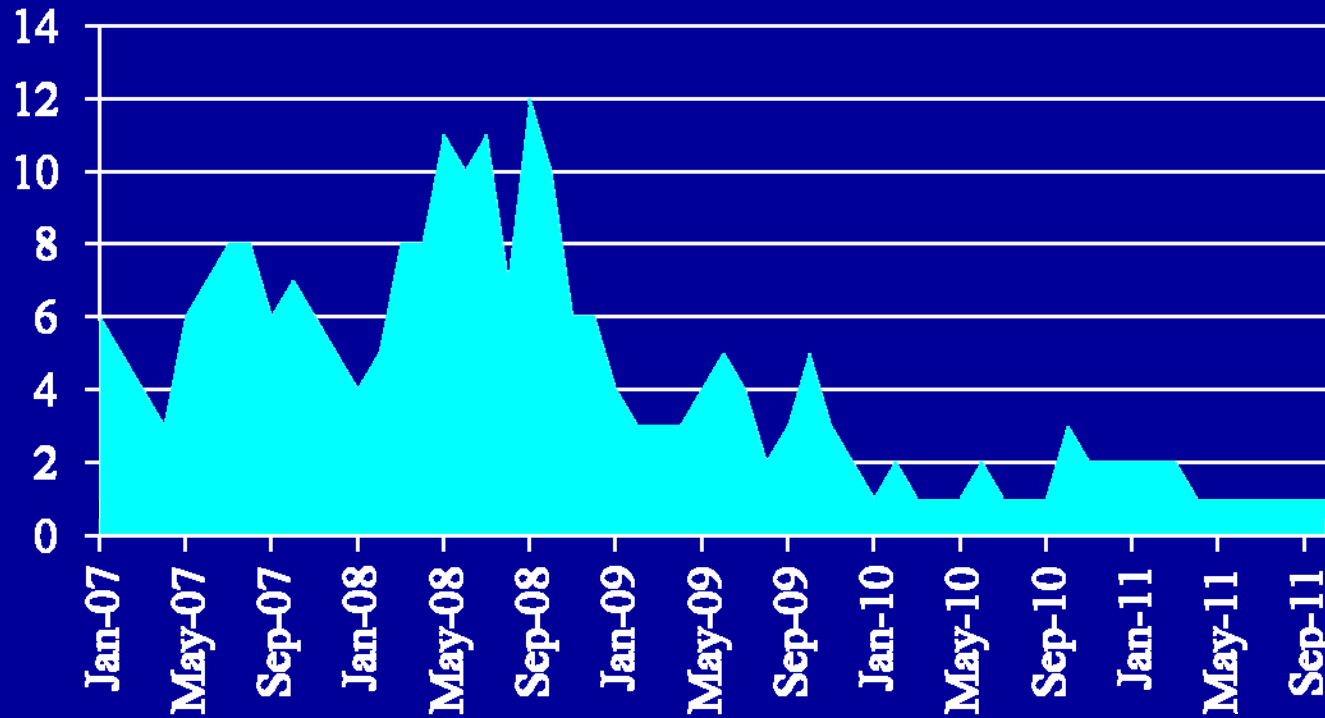
**Presentation to the Juvenile Jurisdiction Policy &
Operations Coordinating Council
December 21, 2011**

16 and 17 Year Old Offenders Within DOC – Sentenced (All Offenses)

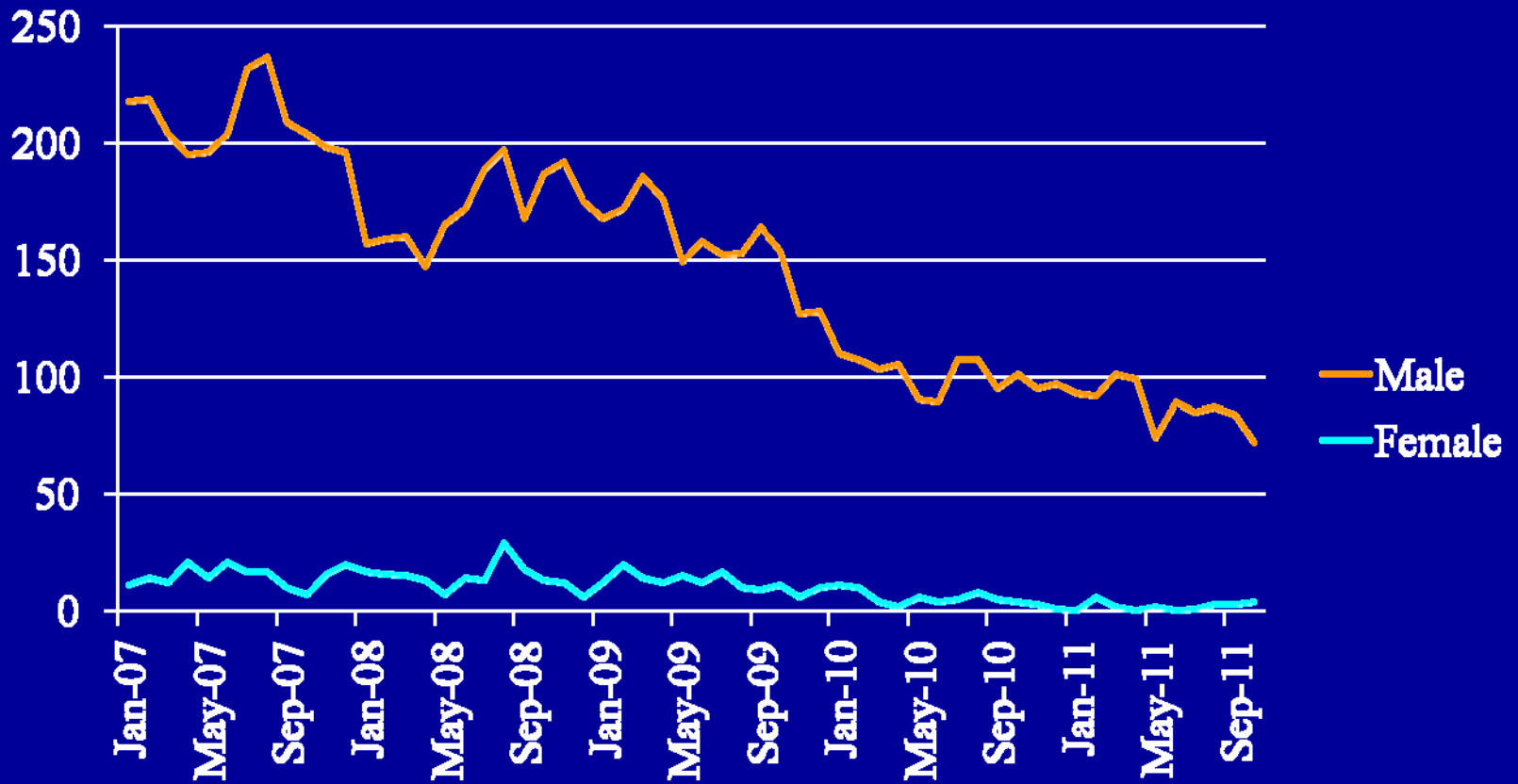


16 and 17 Year Old Females within DOC – Sentenced (All Offenses)

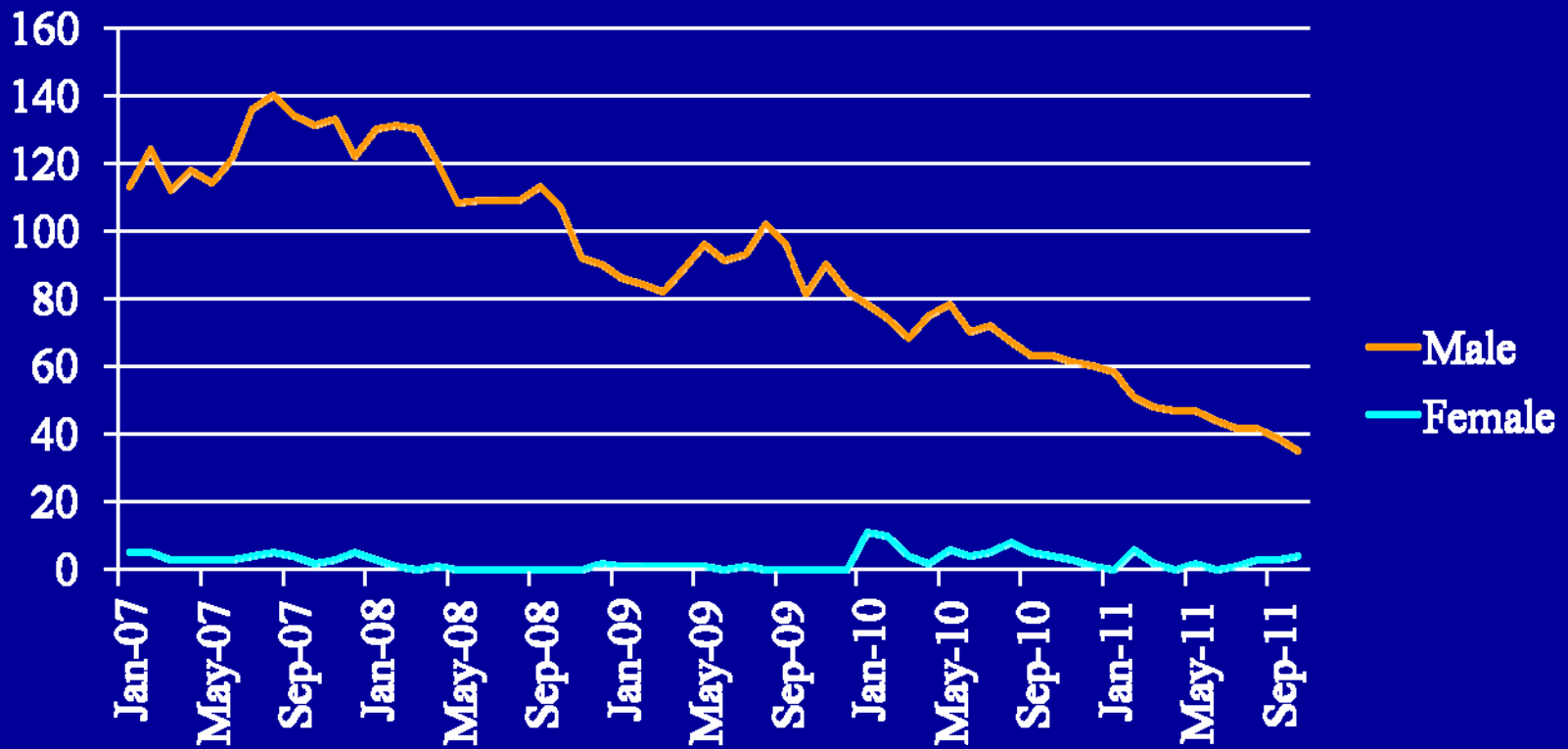
Female Only



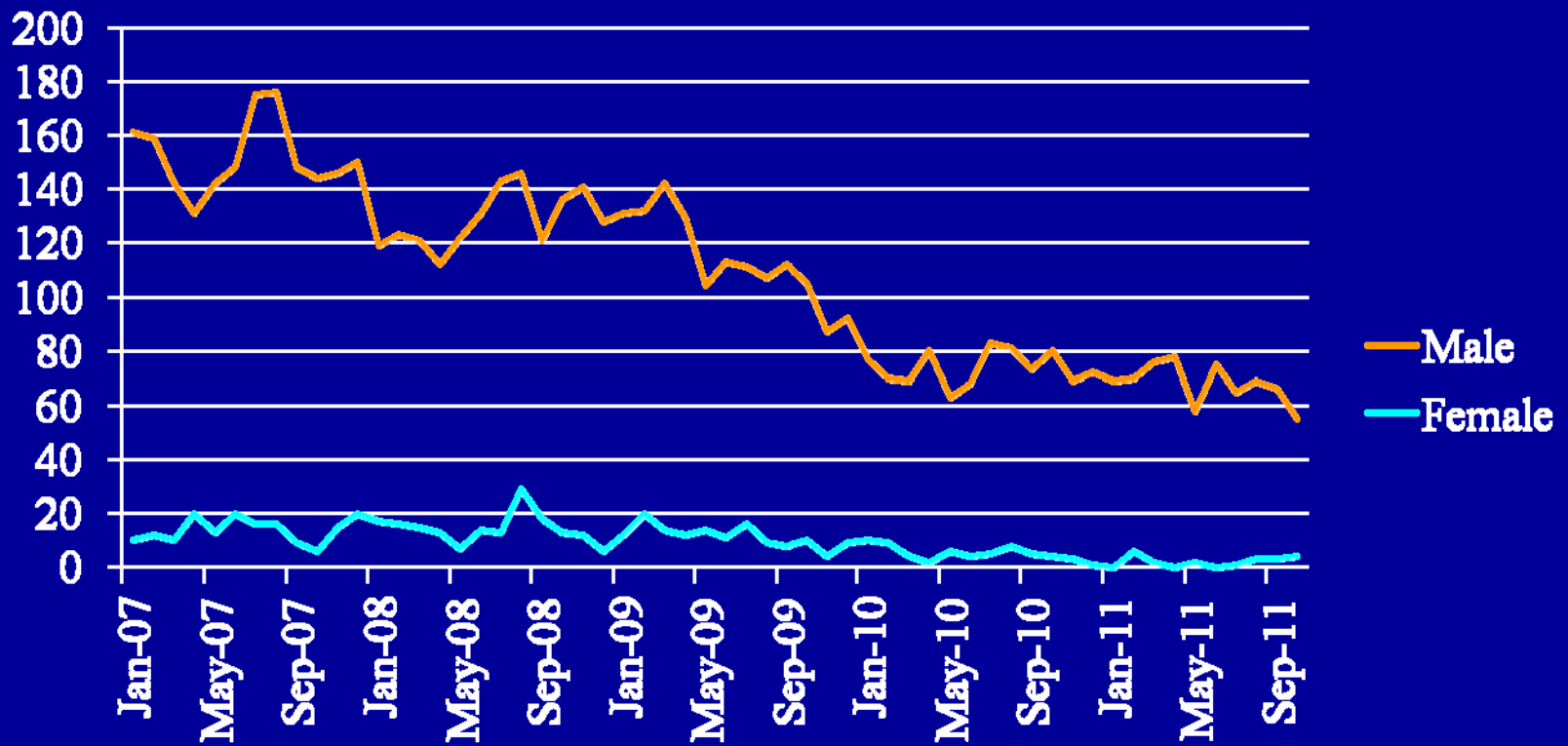
16 and 17 Year Old Offenders Within DOC – Accused (All Offenses)



16 and 17 Year Old Offenders Within DOC – Sentenced – Without Class A & B or Unclassified Felony



16 and 17 Year Old Offenders Within DOC— Accused – Without Class A & B or Unclassified Felony



Programs & Services

Types

- **Mental Health**
 - Examples include individual counseling and wellness groups.
- **Sex Offender Programs**
 - Programming specific to sex offenders.
- **Special Management**
 - Examples include Administrative Segregation, Chronic Discipline & Security Risk Group (Gang) Programming.

Types

- **Addiction Services**
 - Examples include substance abuse counseling, inpatient and outpatient programs and co-occurring disorder groups.



Types

- Core Programs
 - Examples include Thinking for a Change, Anger Management, Embracing Fatherhood and Domestic Violence programming.
- Re-Entry
 - Examples include identification procurement, re-entry discharge planning and Job Centers.

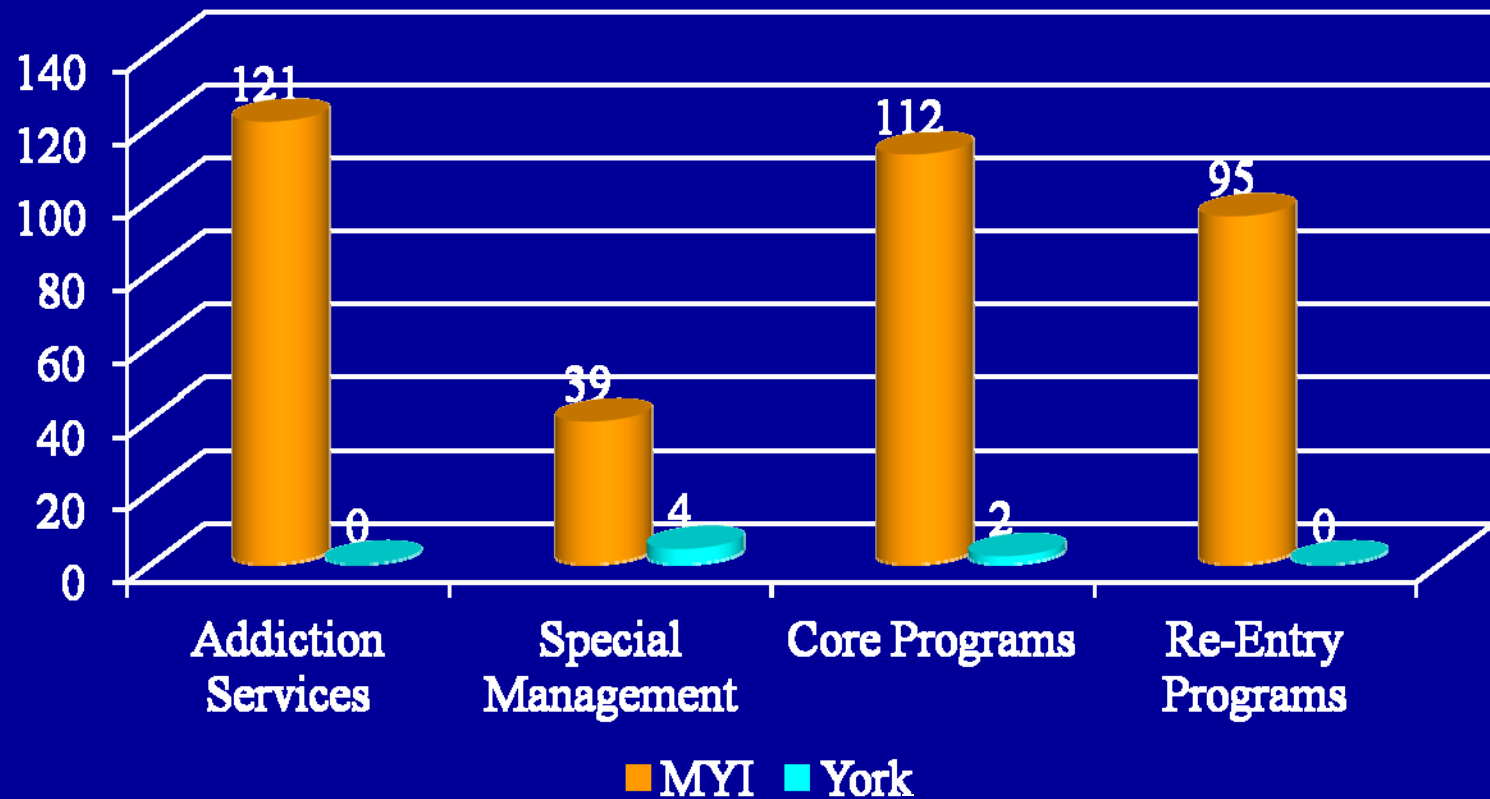
Types

- Education
 - Examples include Family Education & Parenting and Re-entry workbook programming.
- Employment
 - Job Centers are available to provide inmates with opportunities to develop job skills to prepare for gainful employment upon release.
 - Opportunities exist for inmates to hold various jobs within the institution.

Attended Groups 10/1/2010 - 10/1/2011

MYI and York

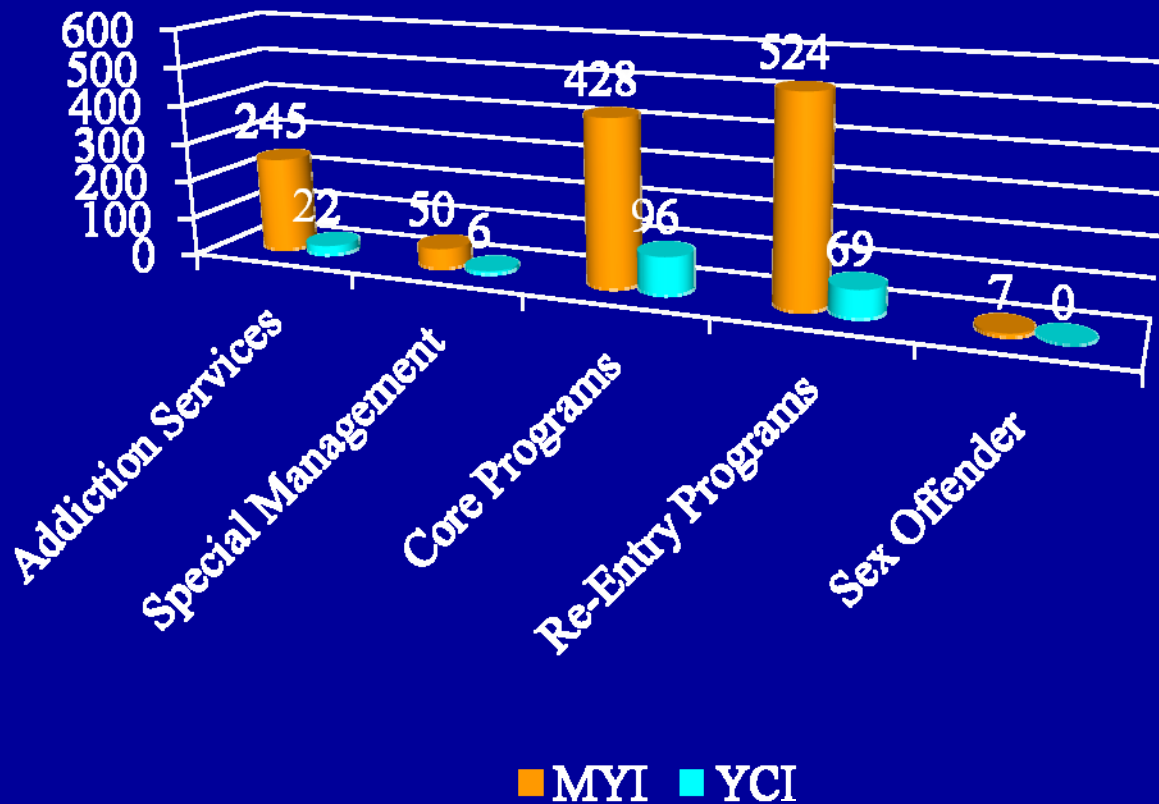
Ages 14 through 18



Attended Groups 10/1/2010-10/1/2011

MYI and York

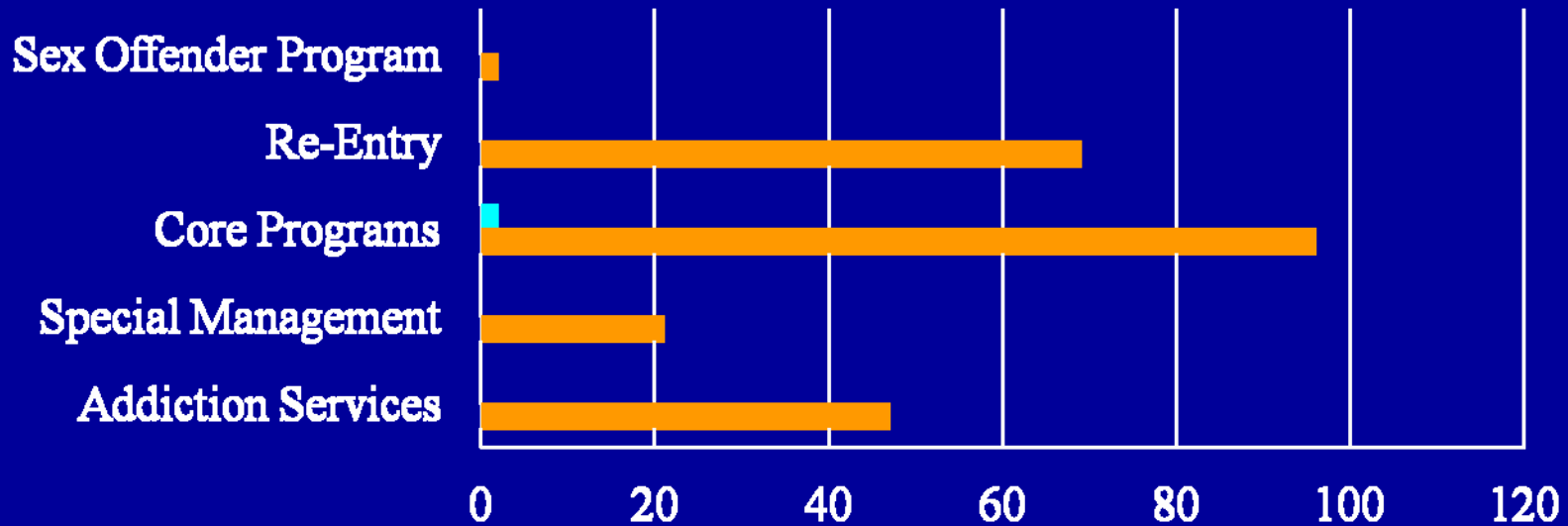
Ages 19 and 20



Completed Groups 10/1/2010-10/1/2011

MYI and York

Ages 14 through 18

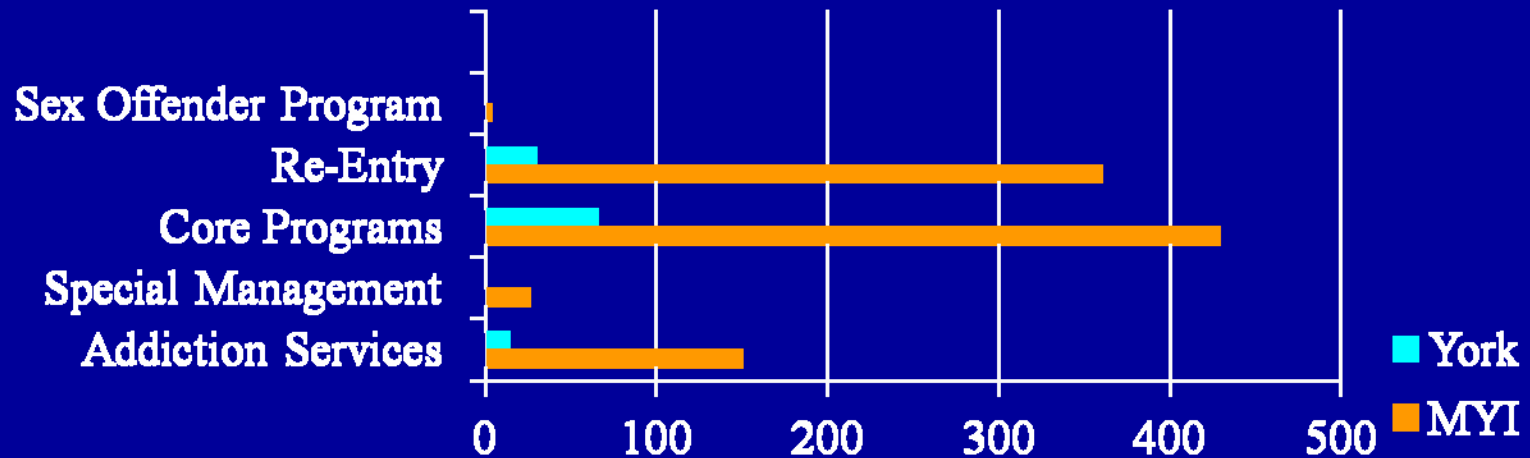


	Addiction Services	Special Management	Core Programs	Re-Entry	Sex Offender Program
■ York	0	0	2	0	0
■ MYI	47	21	96	69	2

Education, Employment, and Mental Health groups are excluded

Completed Groups 10/1/2010-10/1/2011

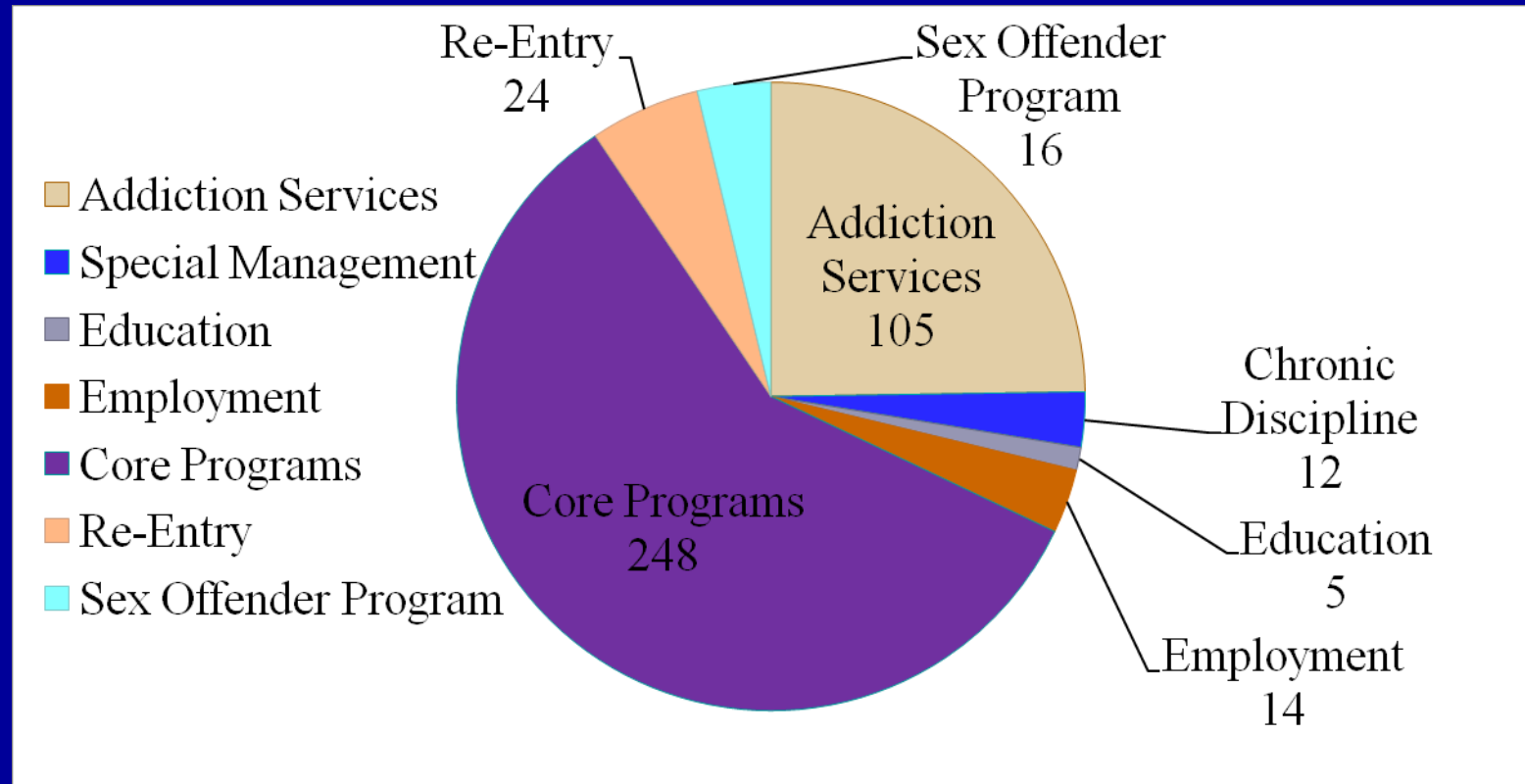
MYI and York Ages 19 and 20



	Addiction Services	Special Management	Core Programs	Re-Entry	Sex Offender Program	
York	14	0	66	30	0	
MYI	150	26	429	360	4	

Education, Employment, and Mental Health groups are excluded

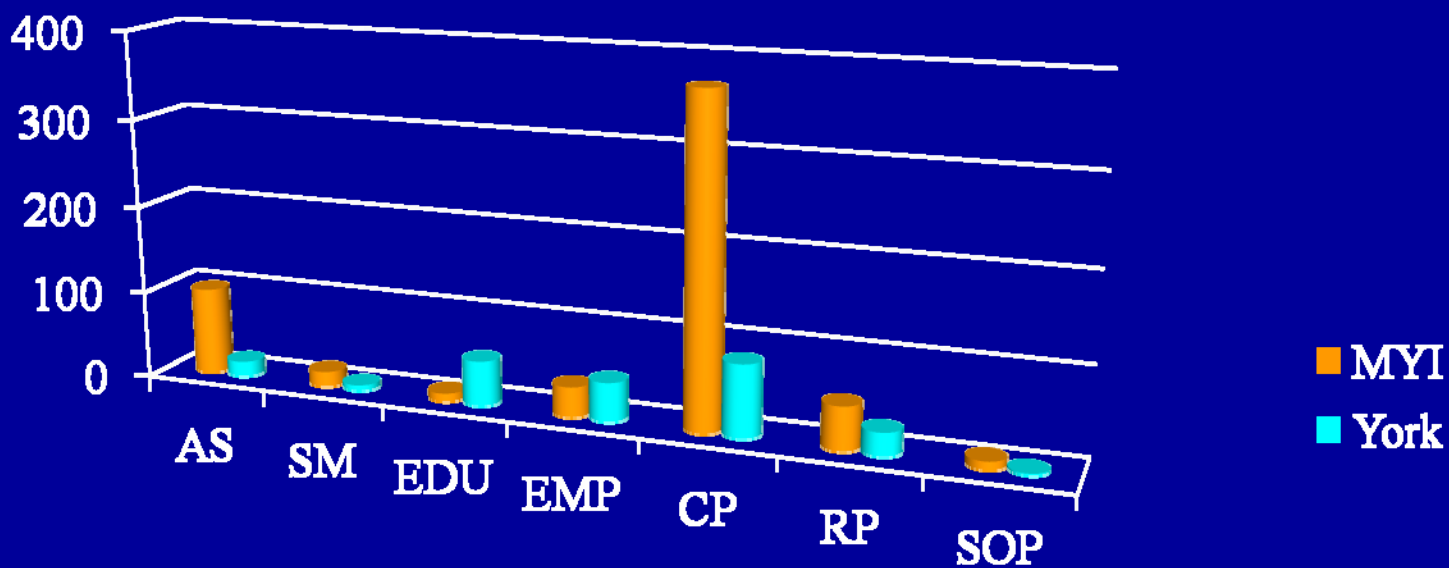
Waiting Lists MYI Ages 14 through 18



Please note the education wait list is for non-mandated programming

As of 11/15/11

Waiting Lists Ages 19 and 20



	AS	SM	EDU	EMP	CP	RP	SOP
■ MYI	99	17	9	34	369	49	9
■ York	17	6	51	44	82	26	2

Outcome of Programs

- **The Department of Correction's core programs are evidence based or informed by best practice. These programs include Reentry Workbook, Anger Management, Thinking for a Change, Domestic Violence and Addiction Services.**
- **An offender's priority on the waiting list is determined by his proximity to release and the existence of programs that have been stipulated by the release authority.**

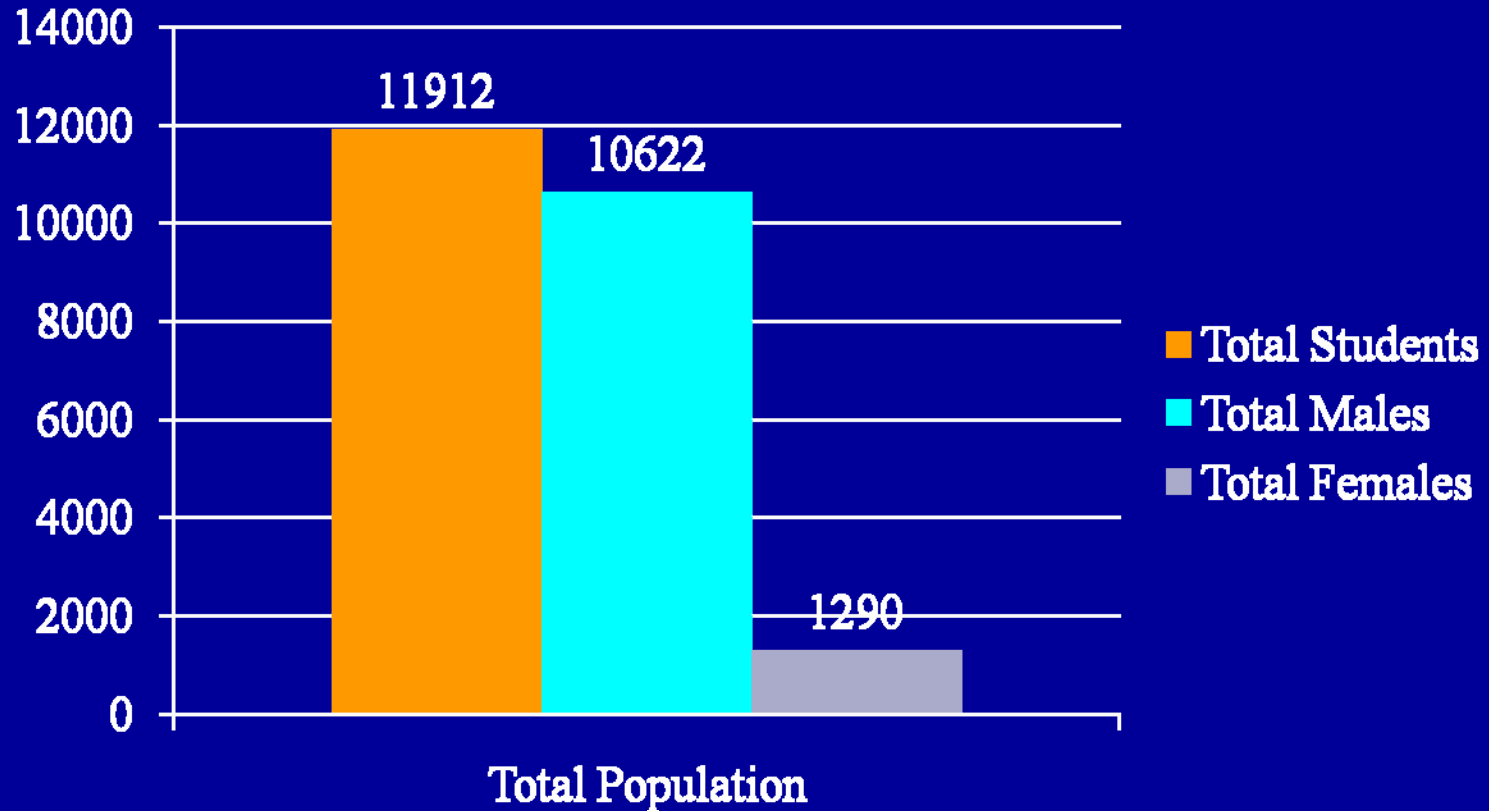
Educational Services

Unified School District #1

Education Services

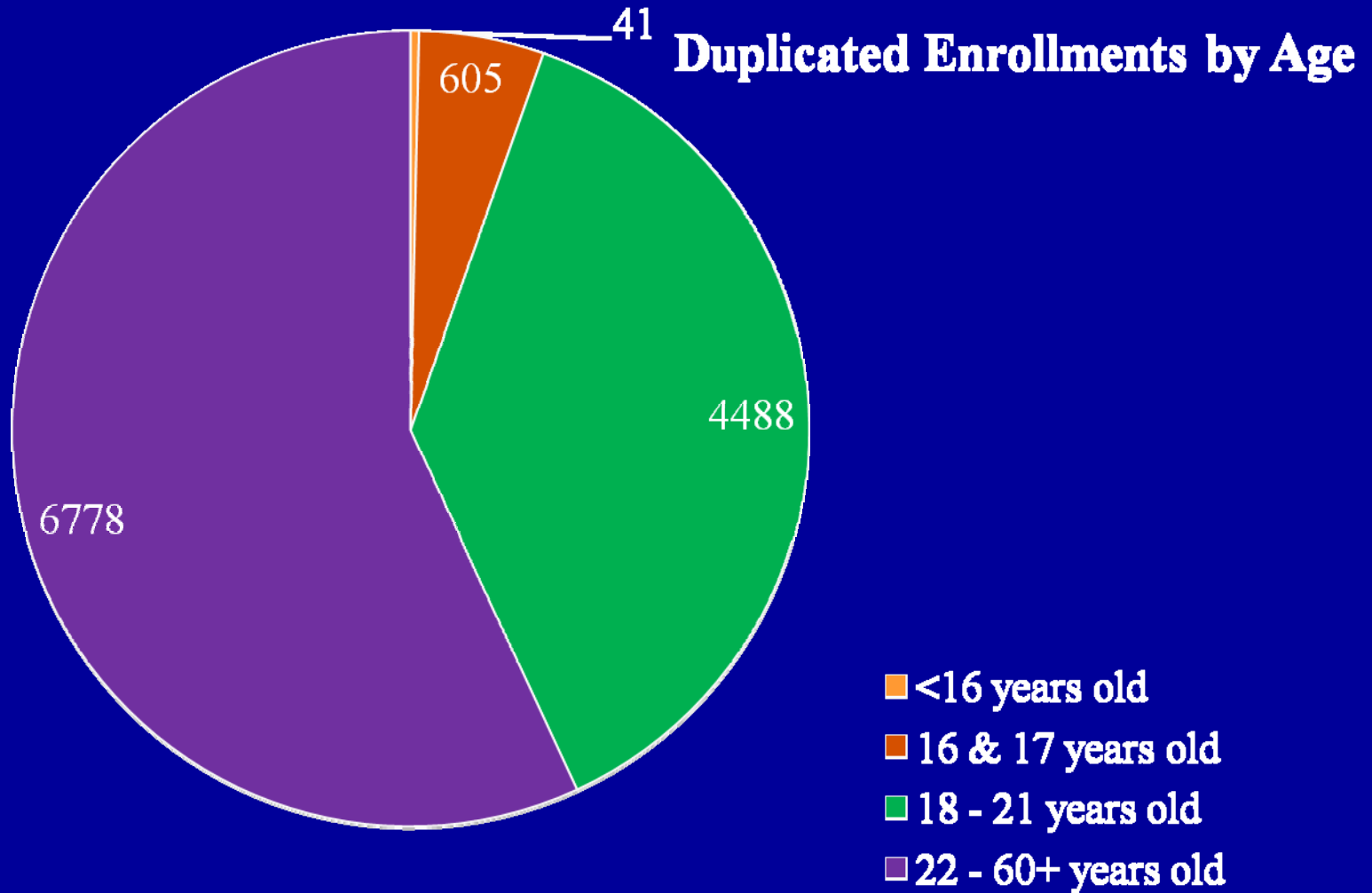
- USD #1 is a legally vested school district within the Department of Correction
- In 2010-2011, USD #1 provided education services to students:
 - 14 – 60+ years old
 - Accused and Sentenced
 - Males and Females

USD #1 Total Enrollment



USD #1 Enrollment by Age

July 1, 2010 through June 30, 2011



USD #1 Programs

Adult Basic Education 1 (0.0 – 4.0)

Adult Basic Education 2 (4.0 – 7.9)

Adult Basic Education 3 (8.0 – 12.9)

Special Education

Vocational Programs

English as a Second Language

Re-entry Preparation

Parenting

USD #1 Diploma Options

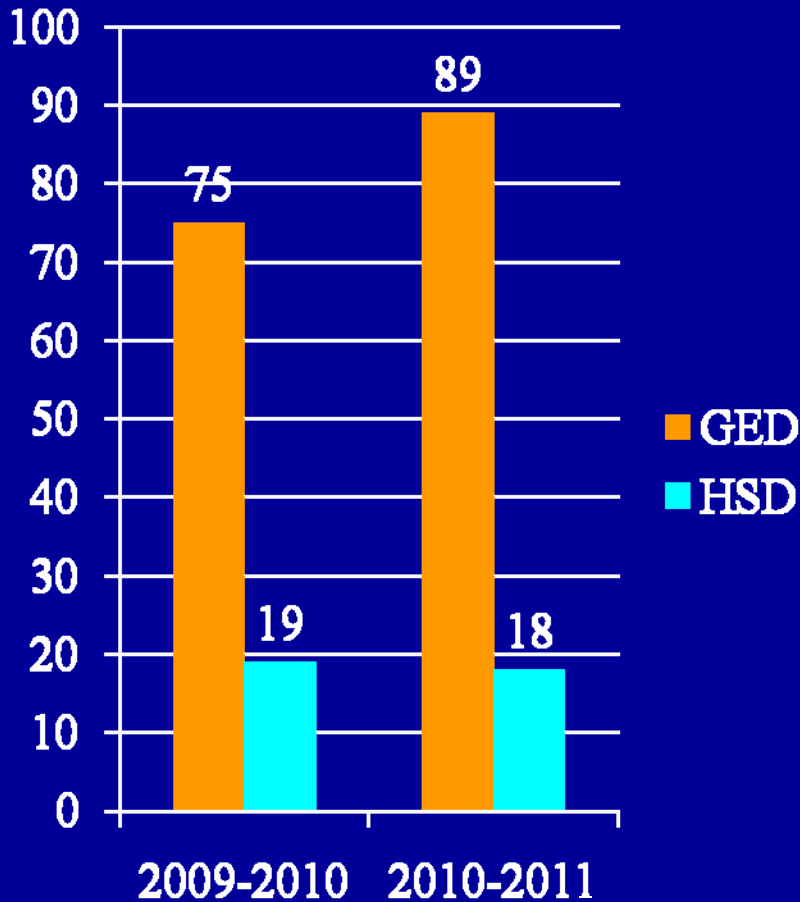
High School Diploma

GED

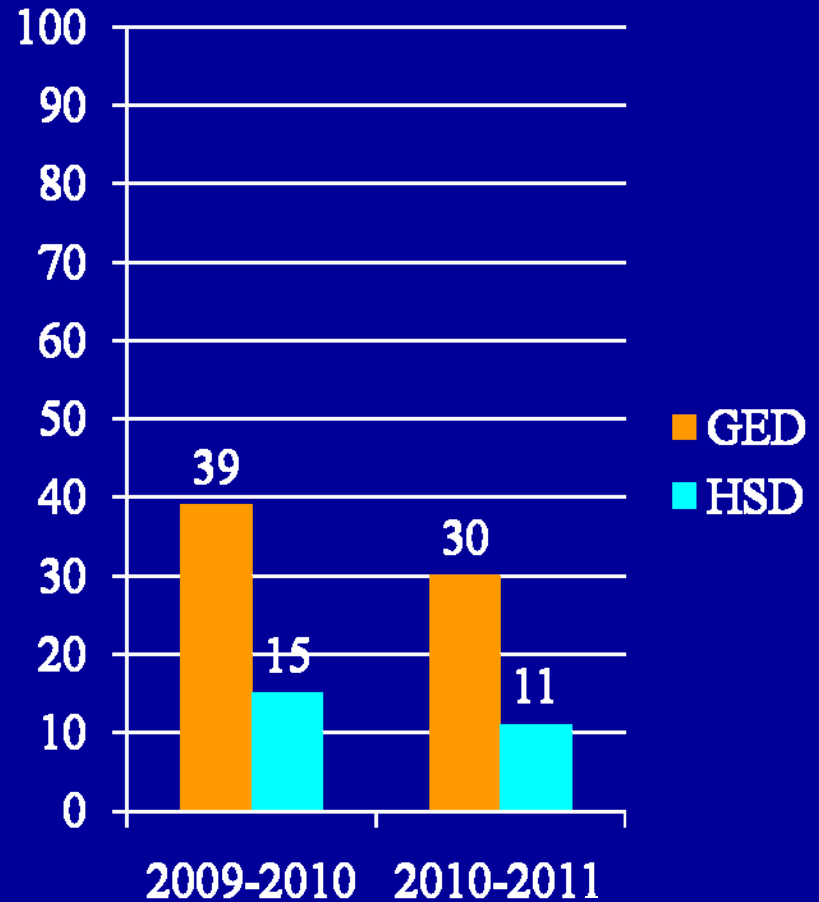
Credit Diploma Program (CDP)

National External Diploma Program (NEDP)

GEDs/HSDs Awarded – USD #1



MYI



YORK

Career & Technical Education (CTE)

MYI

Auto Technology, Computer Support
Technology, Culinary Arts, Graphic
Technologies & Printing

York

Business Education Technology,
Cosmetology Technology, Culinary Arts,
Hospitality Operations Technology

Education Program

Ages 14 through 17 years

- Regular education, as well as special education services are provided
- Students receive instruction in core areas: English, Math, Science, Social Studies (US History/Civics), Physical Education & Technology
- Students are taught by teachers who are State Certified and Highly Qualified in subject areas
- School is in session for a minimum of 900 hours per year
- USD #1 has a 223 day school calendar, 35 days (summer session) more than most public schools

Education Program

(Continued)

- Students ages 14 through 17 are mandated to attend school
- Work together with custody staff to encourage and ensure attendance
- Attendance issues are addressed with students individually, as needed



Educational Barriers

- Records are not always received from prior schools when requested
 - Work continues with SDE to rectify the situation
 - Lack of records causes interruption in services and/or inconsistency in services provided
- Some students leave DOC from court without prior notice. Planning for re-entry is not possible in these cases
- USD #1 enrolls students as they arrive without records or background information, and relies on self-report by students. USD #1 does not wait for records or parent to enroll them prior to them being placed into school

USD #1 Parental Involvement

- Parents are invited to all Planning and Placement Team Meetings
- Parents of newly enrolled students are invited to attend a School-Family Orientation program
- Parent Support Group – parents are invited back on a monthly basis to attend a support group. Bureau of Rehabilitation Services (BRS) has attended and topics are based upon parental needs/wants

USD #1 Students are Successful because...

- Students are enrolled immediately
- Students are taught to their individual needs and skill levels by trained, certified professionals who desire to work with this special population
- Remedial skills are taught as determined by professional staff
- Class sizes are kept to 12-15 students
- Students have access to technology
- Each student sees some form of success

When students receive instruction at
their academic skill level
by teachers who care,
they are able to feel safe,
understand the material,
get less frustrated,
and stay engaged.

Students enjoy learning and see success!

Recommendations

Classroom Sizes and Teacher Ratio

- Classroom size needs to be manageable, teacher to student ratio must stay small
- Many of these students were the ones who have: been suspended and/or expelled in the community, have a myriad of social, emotional issues and learning deficits or did not have positive support or role models. These students need to be followed very closely, by caring individuals to ensure success.

Recommendations

(Continued)

School Enrollment

- Once students return from confinement, a mechanism should be put into place to ensure that all students are enrolled back into school
- This mechanism should include collaboration with parents and schools to ensure student's timely enrollment into school and placement into an appropriate school program

2011 Annual Recidivism Report

- Total number of sentenced prisoners under the age of 18 released or discharged in 2005 = 203
 - Males: 192
 - Females: 11
- Age was determined from the date of release. Males and females were combined.
- Four types of recidivism were calculated
 1. Time to a new arrest
 2. Time to a new conviction
 3. Time to any return to prison (includes technical violations)
 4. Time to return to prison with a new sentence.

Recidivism & Re-Arrest

	Total	18 & Over	17 & Under
Offenders	16241	16038	203
Arrested w/in 12 Months	6823	6687	136
12 Month Rate	42%	42%	67%
Arrested w/in 24 Months	9662	9489	173
24 Month Rate	59%	59%	85%
Arrested w/in 36 Months	10956	10774	182
36 Month Rate	67%	67%	90%

Recidivism & Conviction

	Total	18 & Over	17 & Under
Offenders	16241	16038	203
Conviction w/in 12 Months	3831	3761	70
12 Month Rate	24%	23%	34%
Conviction w/in 24 Months	7111	6986	125
24 Month Rate	44%	44%	62%
Conviction w/in 36 Months	8717	8571	146
36 Month Rate	54%	53%	72%

Recidivism & Prison Admission

	Total	18 & Over	17 & Under
Offenders	16241	16038	203
Prison Admission w/in 12 Months	5547	5440	107
12 Month Rate	34%	34%	53%
Prison Admission w/in 24 Months	7998	7855	143
24 Month Rate	49%	49%	70%
Prison Admission w/in 36 Months	9178	9022	156
36 Month Rate	57%	56%	77%

Recidivism & Return to Prison with a New Sentence

	Total	18 & Over	17 & Under
Offenders	16241	16038	203
New Sentence w/in 12 Months	2167	2121	46
12 Month Rate	13%	13%	23%
New Sentence w/in 24 Months	4497	4411	86
24 Month Rate	28%	28%	42%
New Sentence w/in 36 Months	5945	5831	114
36 Month Rate	37%	36%	56%

State of Connecticut Department of Correction

